

**The Compton Heights Band's**  
**Annual**  
**Memorial Day Concert**



**Monday, May 30, 2005**  
**3:00 PM**  
Tower Grove Park

Featuring: Robert Ellison, Baritone



Bridge Partners  
Presents...

The  
Compton Heights Concert Band  
in

**Compton Gate Condos**  
**Groundbreaking Ceremony**



**Thursday, April 7, 2005**  
**4:00 PM**  
South Grand Boulevard at Flad

Groundbreaking Ceremony at 4:30 with  
Mayor Francis Slay and Alderman Steven Conway

## The Compton Heights Concert Band

- 1976 Band Formed in living room in Compton Heights neighborhood
- 1977 First Concert in Tower Grove Park
- 1979 First Holiday Pops Concert
- 1980 *TuneFul Tuesdays* now *Musical Mondays* summer concert series in Tower Grove Park
- 1983 VP Fair-audience of 1 million, band bus ends in river!
- 1984 Band charity bingo begins
- 1986 *Sunday Serenades* concert series in Francis Park begins
- 1988 Band hosts Association of Concert Bands Convention
- 1989 First Tour to St. Joseph and Omaha
- 1992 First indoor series - Band on Grand and First Missouri Arts Council tour - Hermann, MO
- 1998 First Powell Symphony Hall Concert
- 2000 "Sunrise Serenades" TV Show Aired for 18 months on Saturdays, KMOV, Channel 4, CBS
- 2001 Band celebrates its 25th Anniversary!
- \* 2004 Band celebrates 25th Anniversary of summer concert series!

The driving force behind the Compton Heights Concert Band is a preservationist philosophy determined to promote the American Concert Band, the unique American art form created by Patrick Gilmore in the 1860's and perfected by John Philip Sousa at the turn of the last century, and to play the fine concert band literature of yesteryear. As with jazz, another unique American art form, concert bands and concert band literature are undergoing a resurgence in America as we embark on a new millennium. Sousa's concerts were dubbed "the world's greatest pops concerts". In this tradition, a Compton Heights Concert Band concert features programming appealing to all ages and musical tastes; "something for everyone".

From its modest beginning in the Compton Heights neighborhood livingroom of band organizer, President and Executive Director, **Harry F. Swanger**, in 1976, the Band quickly became a metropolitan St. Louis area tradition, attracting over 50,000 listeners annually to its famed dual summer series, ***Sunday Serenades*** in Francis Park and ***Musical Mondays*** in Tower Grove Park. The Band performs at annual holiday concerts and metro area events such as the Old Courthouse. Featured artists include: Hugh Smith, tenor; Peter Nero, piano; Arturo Sandoval, jazz/classical trumpet wizard; Sukay, "Music of the Andes"; Alex Klein, Chicago Symphony's principal oboist; James Christensen, former Music Director, Walt Disney World; BNFL Brass Band; Butchwax & The Hollywoods with Johnnie Johnson and Billy Peek; Jerry Robinson & Sax-O-Peel, The Lennon Brothers; the late William Warfield, Baritone; Debbye Turner, marimba; Ricardo Morales, Metropolitan Opera principal clarinet; Myron Floren, accordion; Keith Brion, Sousa portrayer; The Legend Singers; and our own vocal duo of Robert Ellison and Beverly Stewart-Anderson. The Band also tours in Missouri under the auspices of the State Missouri Arts Council.

**Edward Dolbashian**, Music Director & Conductor, is the orchestra and opera conductor at the University of Missouri, Columbia, the Clayton Symphony, and the Alton Symphony Orchestra, Alton, Ill. Appointed conductor of the Compton Heights Concert Band in September, 1998, he is also a professional oboe and English Horn player. The announcer is **Lucy Schroeder**, wife of band vice-president and tubist **Jon Schroeder**, who is an original member of the Compton Heights Band!

In addition to weekly Band rehearsals, members devote thousands of volunteer hours at its charity bingos at Bandwagon Hall, 6245 Lemay Ferry Road. The Band is also financially supported by Catherine Manley Gaylord Foundation, Clifford Willard Gaylord Foundation, Missouri Arts Council, The Regional Arts Commission, Foot and Ankle Associates, IcelandAir, Southwest Bank, St. Louis Philanthropic Organization, the St. Louis Parks & Recreation Department, Friends of Tower Grove Park and Bandwagon Members. To make a tax-deductible donation mail to Compton Heights Band, 2335 So. Grand, St Louis, Mo. 63104 or call (314) 776-2227. Web: [www.chband.org](http://www.chband.org)

## The Compton Heights Concert Band Compton Gate Condos Groundbreaking Thursday, April 7, 2005

Wm. Shane Williams, Guest Conductor  
Lucy Schroeder, Announcer

### Program-Selected from the Following:

Coronation March	John Williams
Washington Post March	John Philip Sousa
Good Old USA	James Christensen
Meet Me In St. Louis, Louis	Kerry Mills
Take Me Out To The Ballgame	Arr. James Christensen
Here Comes the King	Steve Karmen
St. Louis Blues March	W.C. Handy
National Emblem	E.E. Bagley
Bugler's Holiday	Leroy Anderson
Glowworm	Paul Lincke
Rolling Thunder	Henry Fillmore
Seventy Six Trombones	Meredith Wilson
The Entertainer	Scott Joplin
Fairest of the Fair	John Philip Sousa
El Capitan March	John Philip Sousa
Light Cavalry	Franz Von Suppe'
Themes Like Old Times II	Warren Barker
Star Spangled Spectacular	George M. Cohan
Lambada Hot	Victor Lopez
Circus Bee	Henry Fillmore
Chorus and March from Carmen	Bizet / Bellis
N.Y. Hippodrome	John Philip Sousa
Maple Leaf Rag	Scott Joplin
Hometown Celebration	James Christensen
Stars & Stripes Forever	John Philip Sousa

### Special Thanks To: Bridge Partners

1425 S. 18th Street  
St. Louis, MO 63104

<http://www.BridgePartnersSTL.com>



**The Compton Heights Concert Band  
Presents**

**Sunday Serenades  
and  
Musical Mondays**

**Week 1: Guest Artists: Butchwax & The Hollywoods with  
St. Louis' Favorite Guitarist, Billy Peek!**

Sunday, June 26, 2005 7:30 PM Francis Park  
Monday, June 27, 2005 7:30 PM Tower Grove Park

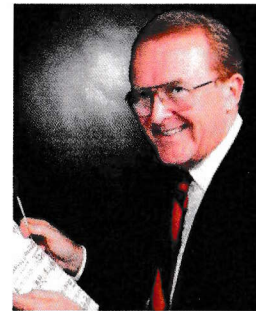


Free Blue Bunny Ice Cream!



**Week 2: Robert Ellison, Overture 1812, Cannons!**

Sunday, July 3, 2005 7:30 PM Francis Park  
Monday, July 4, 2005 7:30 PM Tower Grove Park

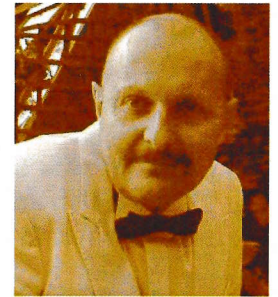


**Week 3: Disney and Much More!  
James Christensen, Guest Conductor**

Sunday, July 10, 2005 7:30 PM  
Francis Park  
Monday, July 11, 2005 7:30 PM  
Tower Grove Park

**Week 4: Whistle A Happy Tune!  
David Morris, World Champion Whistler**

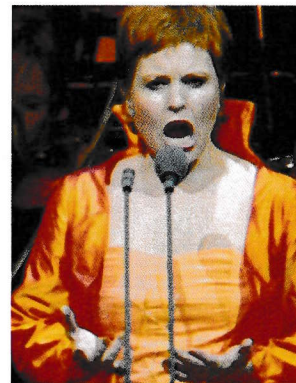
Sunday, July 17, 2005 7:30 PM  
Francis Park  
Monday, July 18, 2005 7:30 PM  
Tower Grove Park



**Week 5: A Vocal Splash!  
Soprano And Tenor!**

**Sigrun Hjalmtysdottir, "Diddú",  
Soprano and Hugh Smith, Tenor!**

Sunday, July 24, 2005 7:30 PM  
Francis Park  
Monday, July 25, 2005 7:30 PM  
Tower Grove Park



**Week 6: Fabulous Finale!  
Hugh Smith- The Fantastic Tenor!**

Sunday, July 31, 2005 7:30 PM  
Francis Park  
Monday, August 1, 2005 7:30 PM  
Tower Grove Park



## Join the Bandwagon Today!

We need your help -- everybody's help - to continue this revered St. Louis tradition. Please take a moment now to send or call in your tax deductible donation. Your \$50 or more donation admits you as a member of our Bandwagon booster group. Although the concerts are free and accessible to all, presenting a first class production each year requires substantial government, corporate, and individual help in addition to astonishing volunteer hours expended by the band members in rehearsing, performing, and fund-raising! Join the Bandwagon today! Harry F. Swanger, President

*"You have a musical jewel! Take good care of it!" James Christensen, Walt Disney Consultant and former Music Director.*

### I want to help the Band and be a Bandwagon member!

- \_\_\_\_\_ \$1,000 Sousafanatic
- \_\_\_\_\_ \$ 500 Bandmaster
- \_\_\_\_\_ \$ 250 Assistant Bandmaster
- \_\_\_\_\_ \$ 150 Band Director
- \_\_\_\_\_ \$ 100 Band Member
- \_\_\_\_\_ \$ 55 Band Aide
- \_\_\_\_\_ \$ 50 Senior Band Aide (65 and over)

Please print your name as you would like it listed in the program.

Name: \_\_\_\_\_

Address: \_\_\_\_\_

City \_\_\_\_\_ State \_\_\_\_\_ Zip \_\_\_\_\_

Telephone: \_\_\_\_\_

\_\_\_\_\_ Check enclosed (Payable to Compton Heights Band, Inc.)

\_\_\_\_\_ Charge (Visa or Mastercard only)

Account Number: \_\_\_\_\_

Expiration Date: \_\_\_\_\_

**Compton Heights Band, Inc.**  
 2335 So. Grand  
 St. Louis, Missouri 63104  
 Office (314) 776-2227  
 Fax (314) 772-9797  
[www.chband.org](http://www.chband.org)

## The Compton Heights Concert Band

Guest Conductor  
 Wm. Shane Williams

Bob Shiflet  
 Becky Soeder  
 Jaynie Tatro  
 Dawn Wetzel

French Horn  
 Thomas Manemeit  
 Jim Olfky  
 Paul Thomas

Announcer:  
 Lucy Schroeder

Alto Clarinet  
 Brad Kelly

Trombone  
 Doug Bert  
 Ed Redmond  
Bass Trombone  
 Lindsay Barth

Flute  
 Mignon Been  
 Carol Marsh  
 Lisa Tipton

Bass Clarinet  
 Erin Jackson  
 Laura Pritchard

Percussion  
 Mark Fox  
 Adam Kopff  
 Kevin Luker

Piccolo  
 Carol Marsh  
 Lisa Tipton

Alto Saxophone  
 Bruce Devens  
 Nancee Glaser  
 Bryan Johnson

Tuba  
 Philip Alderman  
 Jon Schroeder  
 Curtis Schroyer

Bassoon  
 Harry Swanger

Oboe  
 Diane Moose

Trumpet  
 Mark Blackmore  
 Lisa Blackmore  
 Jacqueline Fanning  
 Atena Kasprzak  
 Meagan Klein  
 George Stroud  
 Stephen Tatro  
 Mary Weber

Announcer:  
 Lucy Schroeder

Clarinet  
 Steve Abraham  
 Ruth Bailey  
 Katie French  
 John Kennedy  
 Bryan Kirchoff  
 John Meuser  
 Catherine Reitz  
 Vicky Schorr

President/Exec. Dir:  
 Harry Swanger

Music Director/Conductor:  
 Edward Dolbashian

## Join The Band!

Give us a try, fill out the form below. Send/Fax to the Compton Heights Band! Call Harry Swanger, Band President, at (314) 776-2227 (leave message) for more details and to follow up on your interest. Fax: (314) 772-9797

Name: \_\_\_\_\_

Address: \_\_\_\_\_

Day Phone Number: \_\_\_\_\_

Night Phone Number: \_\_\_\_\_

Instrument you play : \_\_\_\_\_